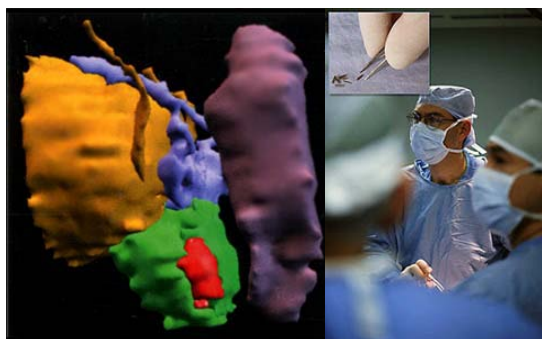




**Alabama
Comprehensive
Cancer Control
Coalition**

PROSTATE CANCER SUMMIT 2007

Call to Action



**DoubleTree Hotel
Birmingham, Alabama
June 15, 2007**

**Free Registration at www.uabmhrc.com
1-877- MHRC-UAB**



Sponsored by the University of Alabama School of Medicine
Division of Continuing Medical Education

Welcome

Dear Colleagues:



Congratulations on taking the first step to addressing Prostate Cancer in the State of Alabama. This summit is proof of the work that you do in your communities and is evidence of the strides we are making toward the common goal of cancer control.

This summit covers a broad range of issues surrounding Prostate Cancer from controversies in screening and treatment to emerging research and technologies. I fully support this summit and encourage each of you to take this information back to your constituents and work to eliminate the burden of Prostate Cancer in the State of Alabama.

I want to express my appreciation to the Alabama Comprehensive Cancer Control Program at ADPH, the University of Alabama at Birmingham Division of Preventive Medicine and the Minority Health and Research Center for sponsoring this conference and for the work which has gone into making it possible. It is comforting to know that we at ADPH have partnerships which allow us to make a difference in the state and to advocate for those in our population whose lives are impacted by Prostate Cancer.

Sincerely,

A handwritten signature in black ink, appearing to read "D. Williamson".

Donald E. Williamson, M.D.
State Health Officer

Dear Colleagues:



Each year, nearly 24,000 Alabamians are diagnosed with cancer and approximately 10,000 deaths are associated with this disease. Among Alabama men, prostate cancer is the most commonly diagnosed cancer. African American men have the highest prostate cancer incidence and mortality rate.

UAB is leading efforts to transfer the newest discoveries, many of which are developed at UAB, to physicians nationwide and communities in Alabama. I am pleased to say that the researchers, physicians, and educators at the UAB are devoted to promoting informed decision-making for prostate cancer screening; offering patients state-of-the-art treatment therapies; and ensuring that prostate cancer survivors experience an optimal quality of life.

Additionally, under the leadership of the Minority Health & Research Center at the UAB, community outreach activities are underway to train lay volunteers across the state to work in tandem with medical professionals to raise awareness and dispel myths associated with prostate cancer.

This summit will provide you with the latest advances in diagnosis, treatment and research findings in prostate cancer, as well as an opportunity for expert dialogues to review policy changes that would benefit all. I hope you find this event productive and informative.

A handwritten signature in black ink, appearing to read "Carol Z. Garrison".

Carol Z. Garrison
President
The University of Alabama at Birmingham

Speakers



Christopher Amling, MD
Professor and Director Division of Urology
University of Alabama at Birmingham



Graeme Bolger, MD
Associate Professor Division of
Hematology/Oncology
University of Alabama at Birmingham



Michael Bivins, MD
Urology Centers of Alabama



Pam Bostick
Health Initiatives Director Outreach &
Collaborative Relations
American Cancer Society
Mid-South Division



Kathryn Chapman, DrPA
Director, Comprehensive Cancer Control
Program Bureau of Health Promotion and
Chronic Disease
Alabama Department of Public Health



John Fiveash, MD
Associate Professor
Department of Radiation Oncology
UAB Comprehensive Cancer Center



Mona Fouad, MD, MPH
Professor of Medicine
Director, Minority Health & Research Center
University of Alabama at Birmingham



Linda Goodson
President ACCCC
Interim Deputy Director Center for the Study
of Community Health
UAB School of Public Health



Honorable Parker Griffith, MD
State Senate District 7 Huntsville



Abdul Kallon, JD
Partner
Bradley Arant Law Firm



Kerry Kilbridge, MD
Instructor of Medicine
Harvard Medical School



Elise McLin
Prostate Cancer Community Health
Advisor
University of Alabama at Birmingham



Ivey Lewis, MAEd
Program Manager
Barbershop Men's Health Project
University of Alabama at Birmingham



Thomas Moody, MD
Urology Centers of Alabama



Lewis K. Pannell, PhD
Director, Proteomics and Mass
Spectrometry Research Facility
Mitchell Cancer Institute
University of South Alabama



Timothy Turner, PhD
Professor of Biology and Deputy Director
of Research and Training
National Center for Bioethics in Research
and Health Care
Tuskegee University



Donald Urban, MD
Associate Professor
Division of Urology
University of Alabama at Birmingham



Eugene Wheeler
Program Director
Us TOO International Inc.



Raymond Wynn, MD
Elsie Colle Chair and Associate Director
Community Outreach Information and
Education
USA Mitchell Cancer Institute
Associate Professor and Chief
Radiation Oncology



Theresa Wynn, PhD
Division of Preventive Medicine
University of Alabama at Birmingham



PROSTATE CANCER SUMMIT 2007

Call to Action

DoubleTree Hotel – Birmingham, Alabama

Friday - June 15, 2007

Linda Goodson

Moderator, Prostate Cancer Summit 2007

President, Alabama Comprehensive Cancer Control Coalition

7:30

Registration and breakfast

8:30 – 8:45

Welcome and Greetings

Donald E. Williamson, MD

Alabama State Health Officer ADPH

8:45 – 9:00

State of Prostate Health in Alabama

Raymond Wynn, MD

Vice Chair, Alabama Comprehensive Cancer Control Coalition

9:00 – 10:00

*New and Emerging Technologies in Prostate Cancer
Prevention, Diagnosis and Treatment*

Christopher Amling, MD

UAB Division of Urology

Systemic Therapies for Prostate Cancer

Graeme Bolger, MD

UAB Division of Hematology/Oncology

Latest Advances in Radiation Therapy

John Fiveash, MD

UAB Department of Radiation Oncology

10:00 - 10:15

Break

10:15 - 11:15

*Effects of LHRH Analog Treatment on
Prostate Cancer Adhesion Profile*

Timothy Turner, PhD

Tuskegee University

Development of Better Markers for Prostate Cancer

Lewis K. Pannell, PhD

University of South Alabama

*Minorities in Clinical Trials – Report from the Prostate, Lung,
Colon and Ovarian Cancer (PLCO) Study*

Mona Fouad, MD, MPH

UAB Division of Preventive Medicine

Robotic Prostatectomy

Donald Urban, MD

UAB Division of Urology



PROSTATE CANCER SUMMIT 2007

Call to Action

DoubleTree Hotel – Birmingham, Alabama

Friday - June 15, 2007

- 11:15 – 12:15** *Prostate Cancer Screening and Treatment: Ethical, Legal and Social Implications – Discussion Panel*
Christopher Amling, MD; Abdul Kallon, JD; Ivey Lewis, MAEd; Elise McLin; Gene Wheeler; Theresa Wynn, PhD; Raymond Wynn, MD
- 12:15 – 1:30** Lunch / Keynote address
Health Literacy Barriers to Prostate Cancer Education in the Rural African American Population
Kerry Kilbridge, MD
Harvard Medical School
- 1:30 – 2:15** *Decision Making Models and Tools*
Pam Bostick
American Cancer Society

Raymond Wynn, MD
University of South Alabama
- 2:15 – 3:00** *Local and National Opportunities and Challenges with Public Health Policy*
Pam Bostick, Parker Griffith, MD, Thomas Moody, MD
- 3:00 – 3:15** Break
- 3:15 – 4:00** *Where Do We Want to Be in 2010? How Are We Going to Get There?: Panel & Open Forum*
Michael Bivins, MD, Pam Bostick, Mona Fouad, MD, MPH Parker Griffith, MD
- 4:00 – 4:15** Closing Remarks
Kathryn Chapman, DrPA
Alabama Department of Public Health



This activity has been planned and implemented in accordance with the Essential Areas and Policies of the Accreditation Council for Continuing Medical Education (ACCME) through the joint sponsorship of the University of Alabama School of Medicine (UASOM), UAB Minority Health & Research Center (MHRC), Alabama Department of Public Health, Alabama Comprehensive Cancer Control Coalition, Centers for Disease Control, and the American Cancer Society. The UASOM is accredited by the ACCME to provide continuing medical education for physicians. The University of Alabama School of Medicine designates this educational activity for a maximum of **7 AMA PRA Category 1 credit(s)**. Physicians should only claim credit commensurate with the extent of their participation in the activity. The University of Alabama is an equal opportunity/affirmative action institution.

Organizers & Sponsors



Alabama Comprehensive Cancer Control Coalition (ACCCC)

The mission of ACCC is to develop and sustain an integrated approach to reducing cancer incidence, morbidity, and mortality and to improving quality of life and care for cancer patients, their families, and their caregivers. ACCCC works towards improving access, reducing cancer disparities, advocating for public policy, and implementing the Alabama Comprehensive Cancer Control Plan, which addresses prevention, early detection, treatment, follow-up care, palliation, and behavioral and clinical trials research.

www.alabamacancercontrol.org



Alabama Department of Public Health (ADPH)

The purpose of ADPH is to provide caring, high quality and professional services for the improvement and protection of the public's health through disease prevention and the assurance of public health services to resident and transient populations of the state

regardless of social circumstances or the ability to pay.

www.adph.org



American Cancer Society (ACS)

ACS is the nationwide community-based voluntary health organization dedicated to eliminating cancer as a major health problem by preventing cancer, saving lives, and diminishing suffering from cancer, through research, education, advocacy, and service.

www.cancer.org



Centers for Disease Control (CDC)

CDC is a leader in nationwide efforts to ease the burden of cancer. Through the Division of Cancer Prevention and Control, CDC works with national cancer organizations, state health agencies, and other key groups to develop, implement, and promote effective strategies for preventing and controlling cancer.

www.cdc.gov



UAB Minority Health & Research Center (MHRC)

The MHRC at the University of Alabama at Birmingham is a comprehensive educational, research and community outreach center focused on eliminating health disparities of racial/ethnic minorities. Its mission is to foster partnerships with UAB schools and centers, Historically Black Colleges and Universities, state agencies and grassroots organizations with an ultimate goal of eliminating health disparities.

www.uabmhrc.com

We would like to acknowledge the supporters of this Summit:

AstraZeneca

Alabama Partnership for Cancer Control in the Underserved, Inc.

MedImmune

Sanofi-Aventis

TAP Pharmaceuticals